



**eleven x**



## SJP Properties and Eleven X have set a new standard for business

### Property features:

- Highly flexible & efficient floor-plates
- Floor-to-ceiling glass offers spectacular views
  - 14' slab-to-slab height
  - Signage opportunities
- Prestigious tenant roster includes:



- LEED Gold with LEED Platinum air quality
- On-site owner with expertise in providing high-end, turn-key solutions
  - Ownership provides unparalleled white-glove service to tenants including 24/7 engineer and security coverage
  - Immediate access to 12 subway lines







Prominent entrance and expansive lobby with white-glove service





Exclusive branding opportunities  
for a full floor tenant





On-Site Owner with expertise in providing high-end turn-key solutions





Sample tenant installation





Sample tenant installation





Sample tenant installation



Highly flexible and efficient floor-plates optimize headcount





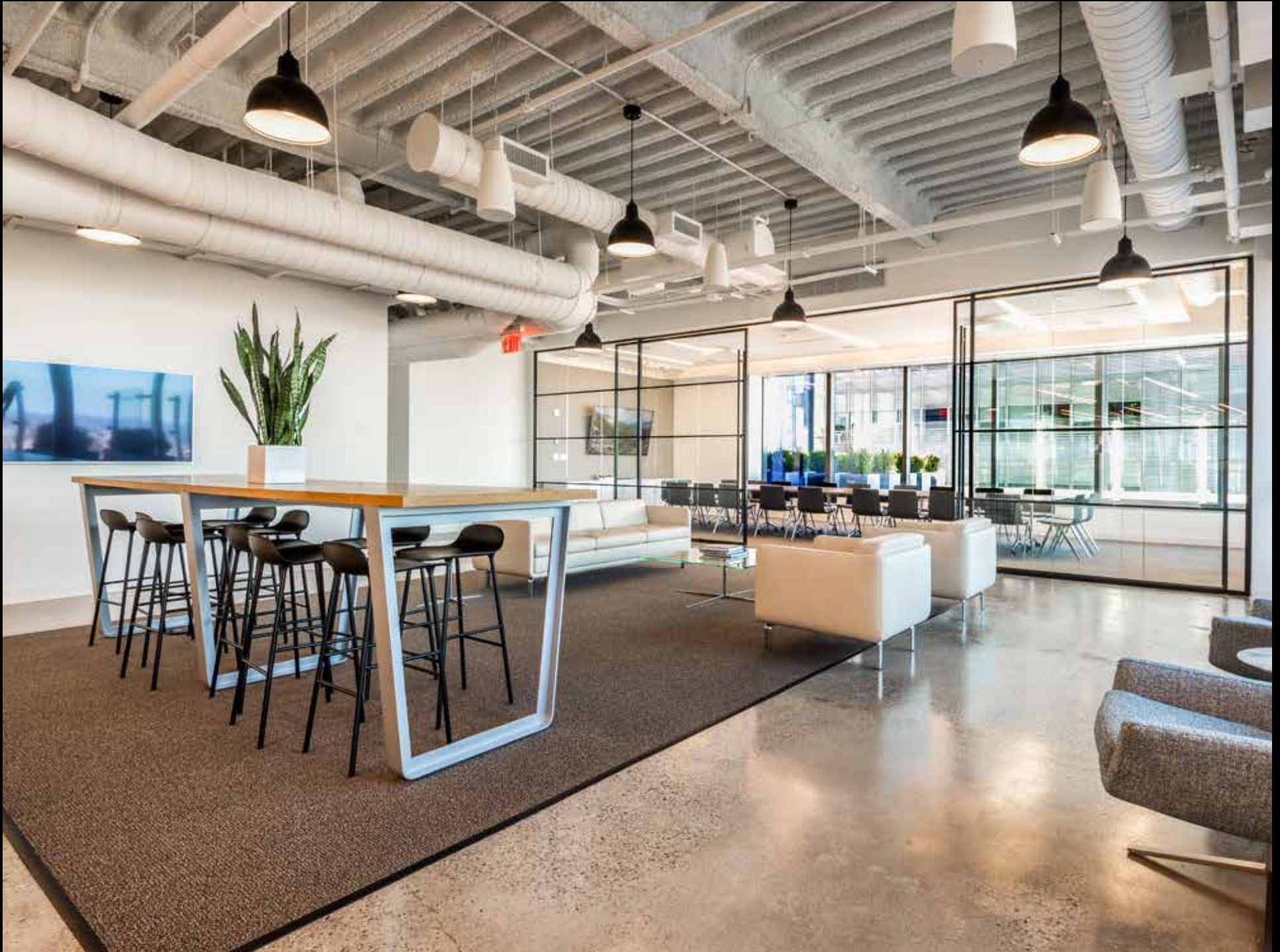
Sample tenant installation





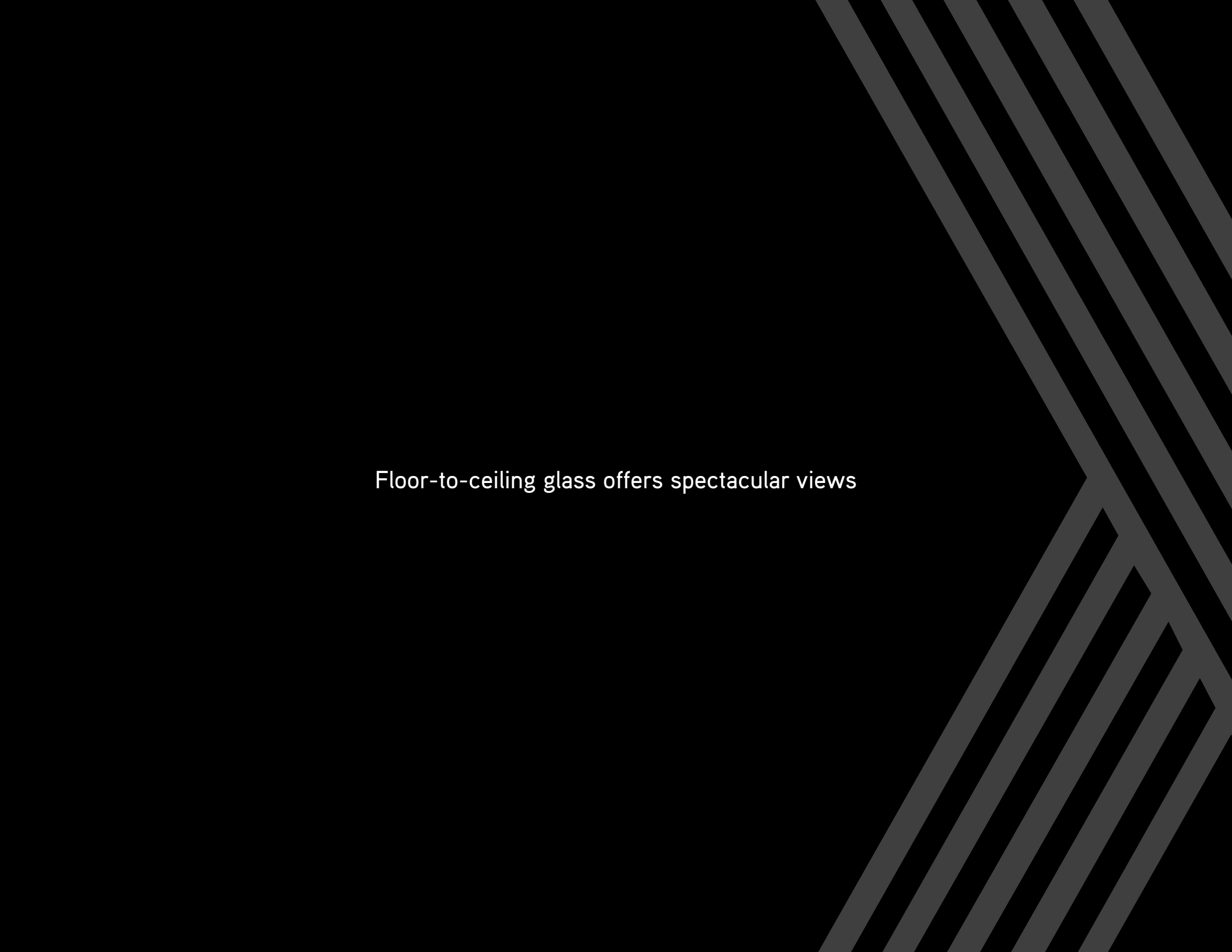
Sample tenant installations





Sample tenant installation





Floor-to-ceiling glass offers spectacular views



Southeast view from tower floor





Northeast view from tower floor





Sample tenant installation

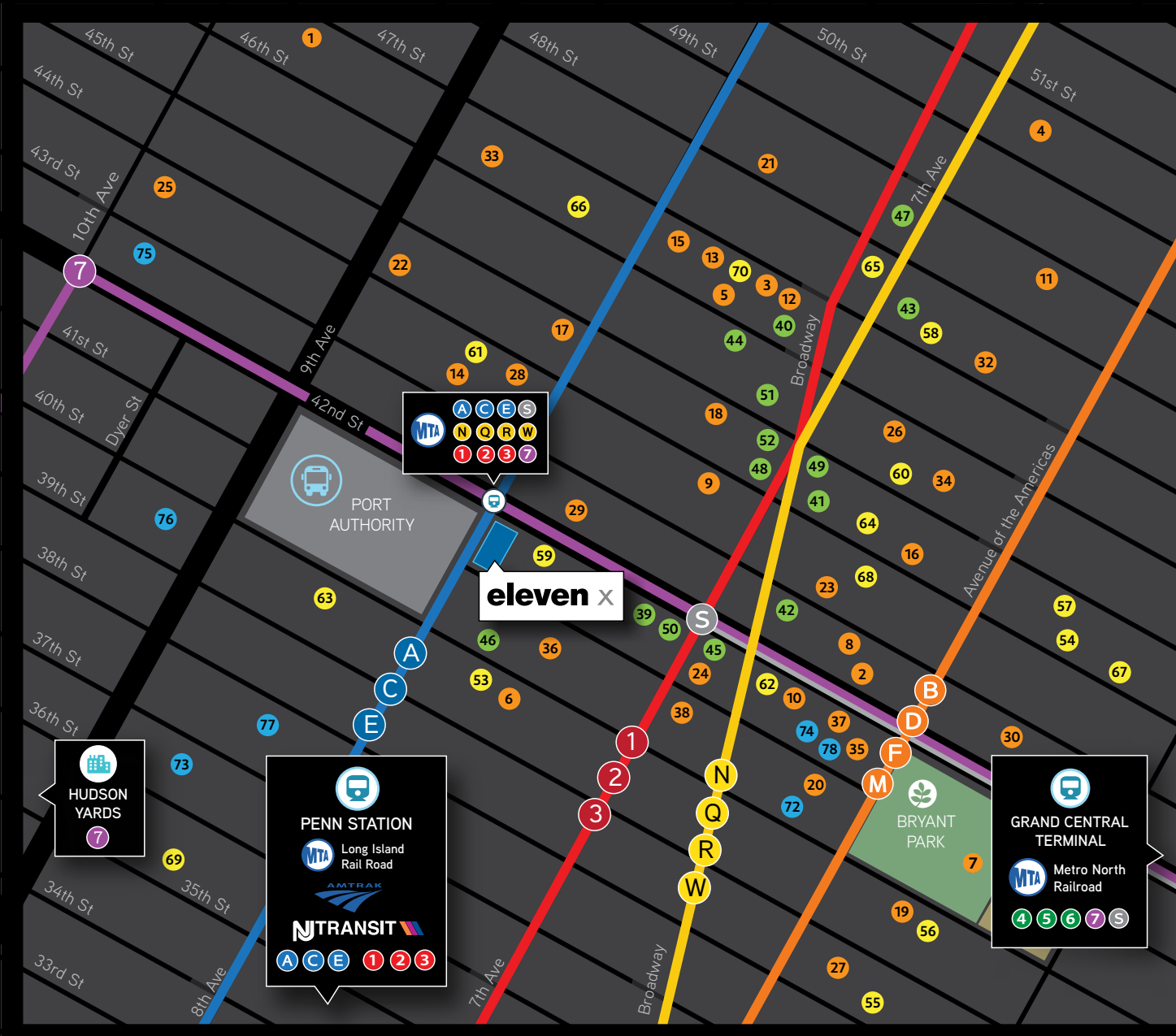




Immediate access to 12 Subways and Port Authority, minutes from Penn Station and Grand Central and surrounded by an abundance of neighborhood amenities







**RESTAURANTS**

- |                         |                          |
|-------------------------|--------------------------|
| 1 ANEJO                 | 20 L'ADRESSE             |
| 2 BEA                   | 21 LA MASSERIA           |
| 3 BLUE FIN              | 22 MARSEILLE             |
| 4 BOBBY VAN'S           | 23 MERMAID OYSTER BAR    |
| 5 BOND 45               | 24 PINK TACO             |
| 6 BOQUERIA              | 25 PIO PIO               |
| 7 BRYANT PARK GRILL     | 26 PRIME CATCH           |
| 8 BURGER & LOBSTER      | 27 REFINERY ROOFTOP      |
| 9 CARMINE'S             | 28 SHAKE SHACK           |
| 10 CHARLIE PALMER STEAK | 29 STARBUCKS             |
| 11 DEL FRISCO'S         | 30 STK                   |
| 12 DOS CAMINOS          | 31 SURAM                 |
| 13 FRIEDMAN'S           | 32 SUSHI BY BOU          |
| 14 FUSHIMI              | 33 SUSHI OF GAR          |
| 15 GLASS HOUSE TAVERN   | 34 THE PUBLIC HOUSE      |
| 16 HUNT & FISH CLUB     | 35 WHOLE FOODS           |
| 17 IL FORNO             | 36 WOLFGANG'S STEAKHOUSE |
| 18 JUNIOR'S             | 37 VALBELLA AT THE PARK  |
| 19 KOI                  | 38 YARDHOUSE             |

**RETAIL**

- |                   |             |
|-------------------|-------------|
| 39 ALDO           | 46 MUJI     |
| 40 AMERICAN EAGLE | 47 M&M'S    |
| 41 GAP            | 48 OAKLEY   |
| 42 H&M            | 49 OLD NAVY |
| 43 HERSHEY'S      | 50 SEPHORA  |
| 44 LEVI'S         | 51 SWATCH   |
| 45 LOFT           | 52 TISSOT   |

**HOTELS**

- |                       |                          |
|-----------------------|--------------------------|
| 53 AC HOTEL TIMES SQ. | 63 MARRIOTT MARQUIS      |
| 54 ALGONQUIN          | 64 MILLENNIUM BROADWAY   |
| 55 ARCHER             | 65 RENAISSANCE TIMES SQ. |
| 56 BRYANT PARK        | 66 RIU PLAZA TIMES SQ.   |
| 57 CASSA HOTEL        | 67 SOFITEL NY            |
| 58 EDITION TIMES SQ.  | 68 THE CHATWAL           |
| 59 HILTON TIMES SQ.   | 69 TRYP                  |
| 60 HYATT CENTRIC      | 70 W HOTEL TIMES SQ.     |
| 61 INTERCONTINENTAL   | 71 WESTIN TIMES SQ.      |
| 62 KNICKERBOCKER      |                          |

**FITNESS**

- |                                |                        |
|--------------------------------|------------------------|
| 72 BLINK FITNESS               | 76 MARK FISHER FITNESS |
| 73 CROSSFIT NYC                | 77 ORANGETHEORY        |
| 74 EQUINOX BRYANT PARK         | 78 SOULCYCLE           |
| 75 MANHATTAN PLAZA HEALTH CLUB |                        |



# eleven x

## Availabilities

Partial 33<sup>RD</sup> FLOOR

**19,583 RSF**

[ Available 2/1/2021 ]

Partial 31<sup>ST</sup> FLOOR

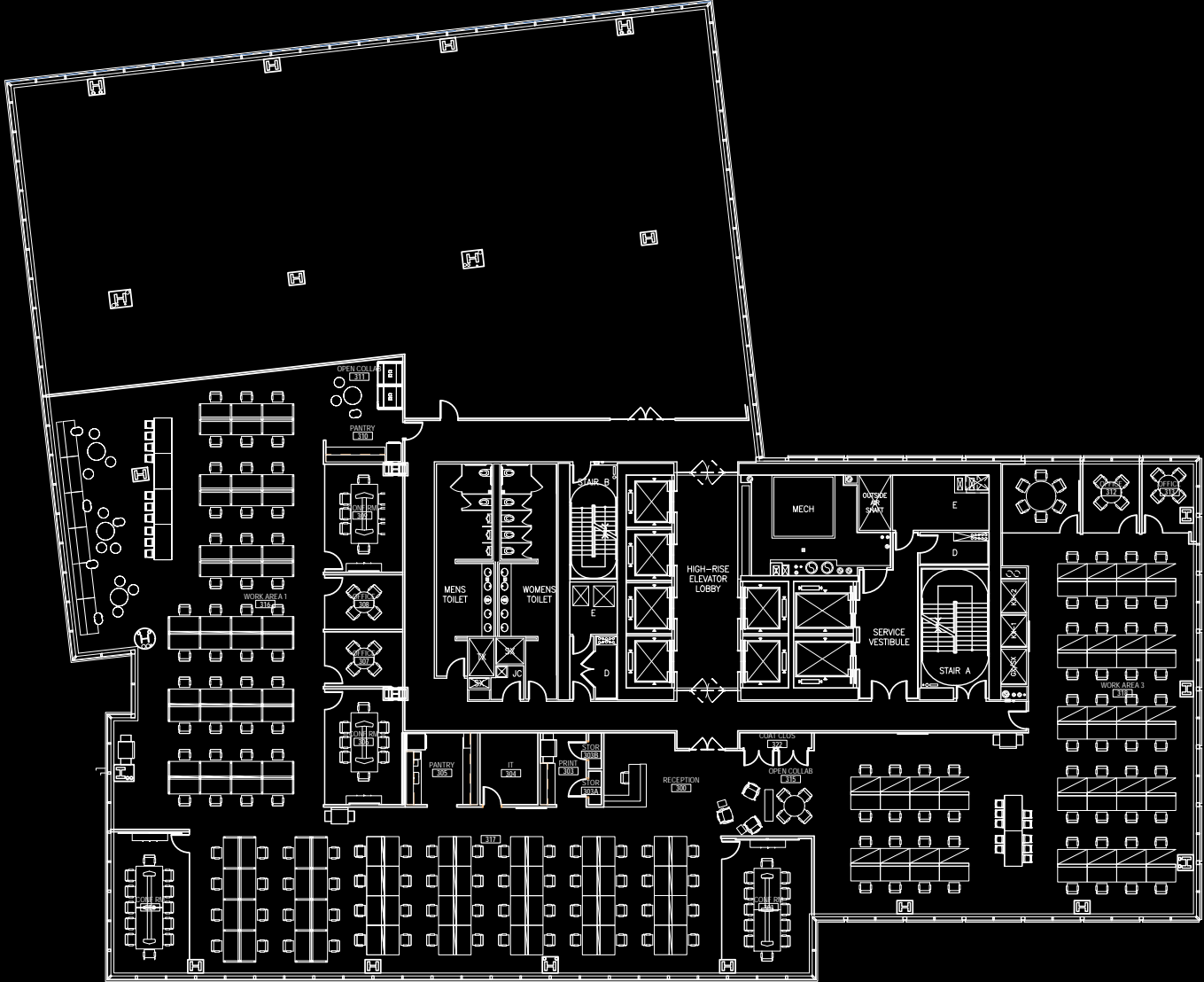
**5,161 RSF**

[ Pre-built / Move-In Ready ]

Partial 10<sup>TH</sup> FLOOR

**6,675 RSF**

[ Pre-built / Move-In Ready ]

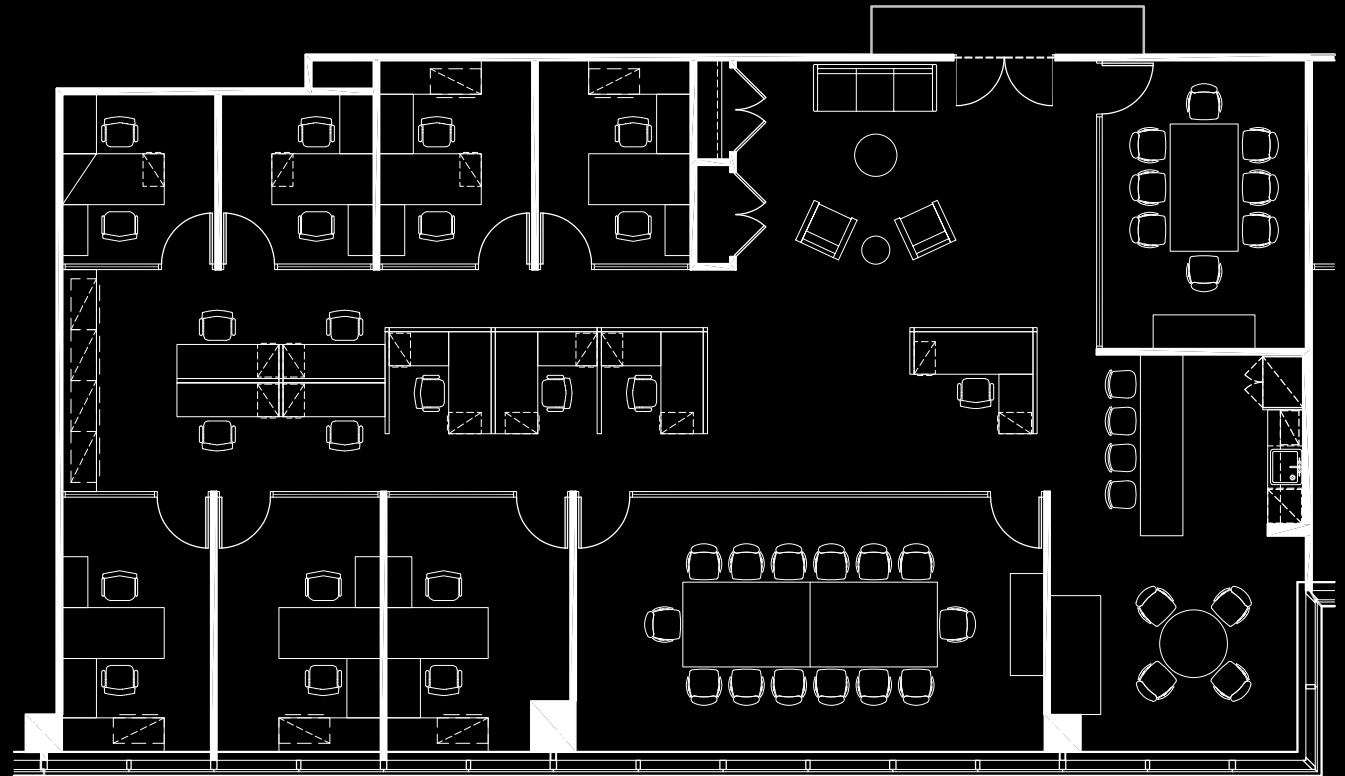




**eleven x**

PARTIAL 31ST FLOOR: EXISTING LAYOUT

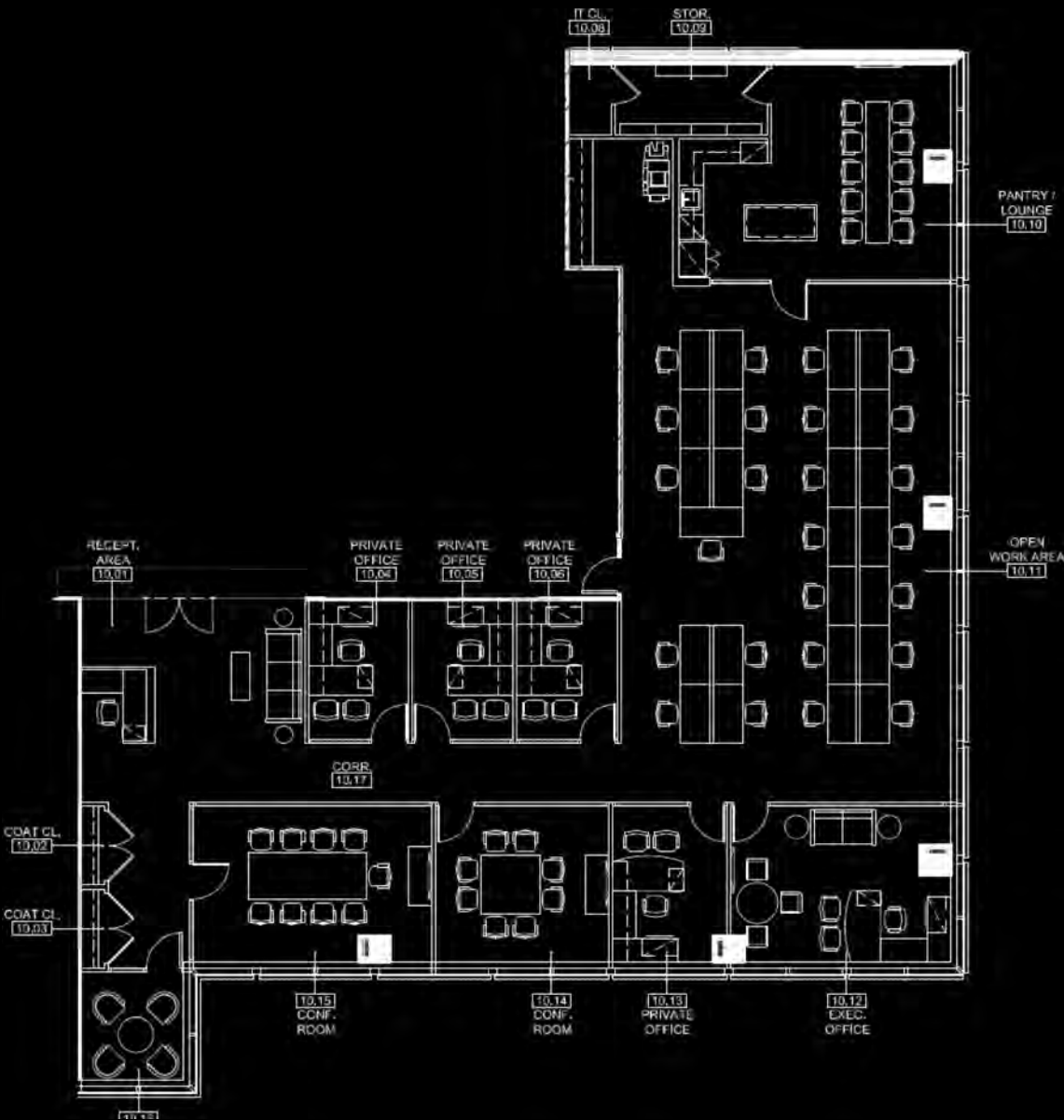
5,161 RSF



# eleven x

PARTIAL 10TH FLOOR:  
PRE-BUILT/ MOVE-IN READY

6,675 RSF





# eleven x

[WWW.ELEVENTIMESSQUARE.COM](http://WWW.ELEVENTIMESSQUARE.COM)

For leasing information, please contact:

Paul Amrich | 212 984 8122 | [paul.amrich@cbre.com](mailto:paul.amrich@cbre.com)

Neil King | 212 984 8352 | [neil.king@cbre.com](mailto:neil.king@cbre.com)

Josh Pernice | O: 212 984 6658 | M: 845 978 0536 | [josh.pernice@cbre.com](mailto:josh.pernice@cbre.com)

Eddie Sisca | O: 212 984 8091 | M: 201 421 7722 | [eddie.sisca@cbre.com](mailto:eddie.sisca@cbre.com)

CBRE

SJP|PROPERTIES

Alexander Erdos  
SJP Properties • 212 335 2200

**CBRE**

